

An aerial photograph of the Melbourne Gardens, showing a large body of water in the foreground, surrounded by dense greenery and trees with some autumnal colors. In the background, the Melbourne city skyline is visible under a cloudy sky.

# Royal Botanic Gardens Victoria Melbourne Gardens

Master Plan Key Projects  
2020–2040



ROYAL BOTANIC  
GARDENS VICTORIA

Royal Botanic Gardens Victoria, its Board, Executive and staff acknowledge the Traditional Owners of Melbourne Gardens, the peoples of the Kulin Nation and pay our deepest respects to their Elders past, present and future. We are grateful and extend our thanks to the Aboriginal Custodians who met with Gardens staff over many months to contribute ideas and provide input to the preparation of all documentation in support of the *Melbourne Gardens Master Plan 2020-2040*.

## TABLE OF CONTENTS

---

<b>Acknowledgement</b>	<b>2</b>
------------------------	----------

---

<b>Foreword</b>	<b>4</b>
-----------------	----------

---

<b>Future Developments</b>	<b>6</b>
----------------------------	----------

---

Map of upcoming projects	7
--------------------------	---

---

Nature & Science Precinct	8
---------------------------	---

---

Birrurung Gate	11
----------------	----

---

Terrace Gardens	12
-----------------	----

---

Arid & Drylands Precinct	14
--------------------------	----

---

Huntingfield Lawn Amphitheatre	16
--------------------------------	----

---

Lakeside Conservatory	18
-----------------------	----

---

Sensory Garden	19
----------------	----

---

Wild Wood	20
-----------	----

---

Creative Seating	21
------------------	----

---

Herb and Medicinal Garden	21
---------------------------	----

---

Nymphaea Lily Lake	22
--------------------	----

---

Entrances	22
-----------	----

---

Ornamental Bridges	23
--------------------	----

---

The Islands	23
-------------	----

---

Resthouses and Follies	24
------------------------	----

---

Picturesque Rockeries and Ruins	24
---------------------------------	----

---

<b>Timelines</b>	<b>25</b>
------------------	-----------

---

<b>Support the Gardens</b>	<b>27</b>
----------------------------	-----------

---

## FOREWORD

Preparing a new Master Plan for what many believe is one of the world's great botanic gardens is an exciting and important task. There is an obligation to preserve and protect the elegance of the original William Guilfoyle design, and a timely need to celebrate the stories of a place with deep history and Aboriginal heritage extending millennia beyond its 174 years as a botanic garden. In an increasingly urbanised society experiencing significant climate change, our botanic gardens must also seek new, thoughtful and creative ways to strengthen our connection with nature and history.

Most critically at this time, there is an urgent need to safeguard Victoria's future by protecting its State Botanical Collection with the construction of a new National Herbarium of Victoria, and to use that opportunity to unlock those collections for scientific research and to deepen our community's connection with nature.

The Melbourne Gardens landscape must continue to change and evolve, and has long provided a green sanctuary and botanical resource for Melbourne. The community living around Melbourne Gardens continues to grow, with the population in Greater Melbourne forecast to double to 8 million by 2040. In close proximity to the Melbourne Gardens, a major new transport hub, the Anzac Station is currently under construction. This will enable more people to access the gardens. At the same time, we must adapt our botanic gardens to an unprecedented climate challenge, threatening natural and garden landscapes alike.

Royal Botanic Gardens Victoria is a scientific organisation and embedded within the landscape are collections of plants supporting conservation, discovery and learning. The living plant collections evolve with the changing needs of our community and the constraints of climate.

Held within Melbourne Gardens is the National Herbarium of Victoria, home to the irreplaceable State Botanical Collection with its 1.5 million preserved plant specimens dating back to the 1600s and painstakingly collected from across the globe. The combined living and preserved plant collections underpin Victoria's response to urgent issues in climate change, biosecurity, natural resource management and Victoria's therapeutic, agrifood and fibre economy.

This Master Plan is more than plants and landscapes. It is about protecting an important State asset and shaping a future for one of the most beautiful and important botanic gardens in the world.

In this new Master Plan, we build on Melbourne's premier green space to stake out a vision for Melbourne Gardens and for Melbourne itself. The premier project is the Nature and Science Precinct which will join the Arts and Culture, and Sports and Entertainment precincts as Melbourne's third major destination by the Yarra River.

This is an urgent yet beautiful plan, one to preserve irreplaceable specimens and usher in a major renewal of our much loved and world renowned Royal Botanic Gardens at Melbourne Gardens. As for all master plans, we anticipate future readers will use this Plan as a guide, noting specifics may evolve as new information emerges. However, the impact and ambition of the Melbourne Gardens Master Plan will remain unchanged, responding as it does to sound community consultation processes and forecast need, future modelling, and gathering evidence for climate impact of unprecedented magnitude.

As we emerge from the impacts of devastating bushfires and the worldwide COVID-19 pandemic, there has never been a more important time to value and protect Melbourne Gardens for future generations. They are, and will continue to be, the inspiration and lungs of our city, and a major international attraction for the State of Victoria.

We welcome you to embrace and support this vision.



Chris Trotman  
Chair, 2020  
Royal Botanic Gardens Board Victoria



Ken Harrison AM  
Chair, 2013 - 2020  
Royal Botanic Gardens Board Victoria



Professor Tim Entwisle  
Director and Chief Executive  
Royal Botanic Gardens Victoria



Chris Cole  
Executive Director Melbourne Gardens



## FUTURE DEVELOPMENTS

---

Over the last 20 years, Royal Botanic Gardens Victoria has led many new landscape projects including The Ian Potter Foundation Children's Garden, Guilfoyle's Volcano, Long Island Redevelopment and Working Wetlands, all carefully guided by previous Master Plans. The next 20 years provides the opportunity to continue this work.

The key project will be the Nature & Science Precinct.

Delivered in stages, the Precinct will highlight the three unique dimensions of a world-leading botanic garden: nature, culture and science and transform the Gardens' arrival experience and connection to the City Of Melbourne. The Precinct includes a sensitively designed, below ground herbarium and vaults, the remodelling of the historic 1934 building and a welcoming public space along the current Dallas Brooks Drive alignment. With strong connections to the rest of Melbourne Gardens, Melbourne Observatory and The Ian Potter Foundation Children's Garden, it will become the Gardens' destination meeting point. The Precinct will include Oak Lawn and extend to a Centre for Gardens Leadership at the existing Works Yard.

A highlight will be a new gate to be created between A Gate and H Gate, providing an entrance along the Gardens' long northern border, resulting in a direct connection to the upgraded boat landing on the Yarra River. This entrance, to be known as Birrarung Gate, will explore indigenous landscape and plantings with strong connections to Long Island, vistas over the Ornamental Lake and a new arrival point to the Gardens. Meanwhile the area at A Gate, the Gardens' second most used entrance, will be redeveloped into a terraced garden with a focus on health and wellbeing and a rich, contemporary design.

Huntingfield Lawn, a finger of land between the northern border of Government House and Alexandra Avenue, has long been underused. Barely recognised as part of the Gardens by the general public, this area is to be gently re-contoured to create a new venue for small-scale theatrical performances, programming and other visitor experiences. Following the ridge line from Huntingfield Lawn, Hopetoun Lawn is to be developed into a Wild Wood, a natural bush kindergarten area to provide families with a natural, unstructured play space rarely found in cities. This development will relieve pressure on The Ian Potter Foundation Children's Garden, which receives thousands of visitors each year.

A primary influence on the Master Plan has been the Gardens' need to respond to climate change, a process guided by the influential Landscape Succession Strategy for Melbourne Gardens. The driest and hottest part of the Gardens is its southeast corner, home to Guilfoyle's Volcano, the Arid Garden and other dry climate collections. This area has been developed into an Arid and Drylands Precinct with the rejuvenation of the Arid Garden, which showcases the valuable Fields cacti and succulent collection.

All the projects mentioned respond to a direct need, and in some cases have been identified in previous Master Plans.

However, this 20-year plan provides the opportunity to consider more global options for the future. One of these longer-term opportunities is a new Lakeside Conservatory on the current site of the Terrace Tearooms. As a 'habitat for humans', this indoor pleasure garden could burst with plants, where people come at all times of the year to work, rest, play, socialise and meet in a landscape environment that provides an intrinsic and profound connection to nature. Sitting sensitively in the landscape as a grand folly, this structure would become a major new landmark and destination in Melbourne.

The Master Plan's suite of new projects is complemented by a series of smaller scale projects including garden bed renovations, infrastructure restorations and conservation work. These include the new Sensory Garden, Herb and Medicinal Garden, triangle beds, reworking of the Ellis Stones Rockery, rejuvenation of the islands and picturesque rockeries, and replacement of the bridges with ornamental structures. Creating more appropriate landscape settings for the historic lodges, follies and Gardens' entrances will also be implemented.

# MELBOURNE GARDENS MASTER PLAN 2020-2040





## NATURE & SCIENCE PRECINCT

### Design statement

The Nature and Science Precinct is designed to transform the Gardens' arrival experience and its connection to the City of Melbourne. The Precinct includes a sensitively designed belowground herbarium and vaults, the re-modelling of the historic 1934 building and a welcoming public space along the current Dallas Brooks Drive alignment.

With strong connections to the rest of Melbourne Gardens, Melbourne Observatory and The Ian Potter Foundation Children's Garden, it will become the Gardens' 'destination meeting point'. The Precinct will include Oak Lawn and extend to a Centre for Gardens Leadership at the existing Works Yard.

The National Herbarium of Victoria on Birdwood Avenue is a focal point for the Precinct. Housed within the Herbarium is the State Botanical Collection of over 1.5 million preserved specimens of plants, fungi and algae, the Victorian Conservation Seedbank, rare and threatened species types and specimens dating back to the 1600s.

All are invaluable to the conservation, botany, biosecurity, pharmaceutical and agriculture industries of Victoria. The Collection cannot be replaced if lost.

A new, state-of-the-art National Herbarium is to be constructed underground addressing the critical issues arising from a lack of space and grossly inadequate conservation conditions in the current building. The new Herbarium will be sensitively constructed around the original 1934 building.

Building upon its success, The Ian Potter Foundation Children's Garden will be broadened as part of the Precinct, with links to new learning and exhibition spaces established in the current Visitor Centre and restaurant building. The land around the Melbourne Observatory and current car park is to be returned to public open space, with paths, garden beds and lawns connecting it to the Domain Parklands. This provides an appropriate setting for the return of the Great Melbourne Telescope and other restored works at the western edge of the Precinct.

As a vibrant visitor experience, the Nature and Science Precinct will be an exciting new addition to Melbourne. It will attract new partners and investment to the Gardens. Expansive and international in scope and scale, it aligns with Melbourne's other significant precinct plans.

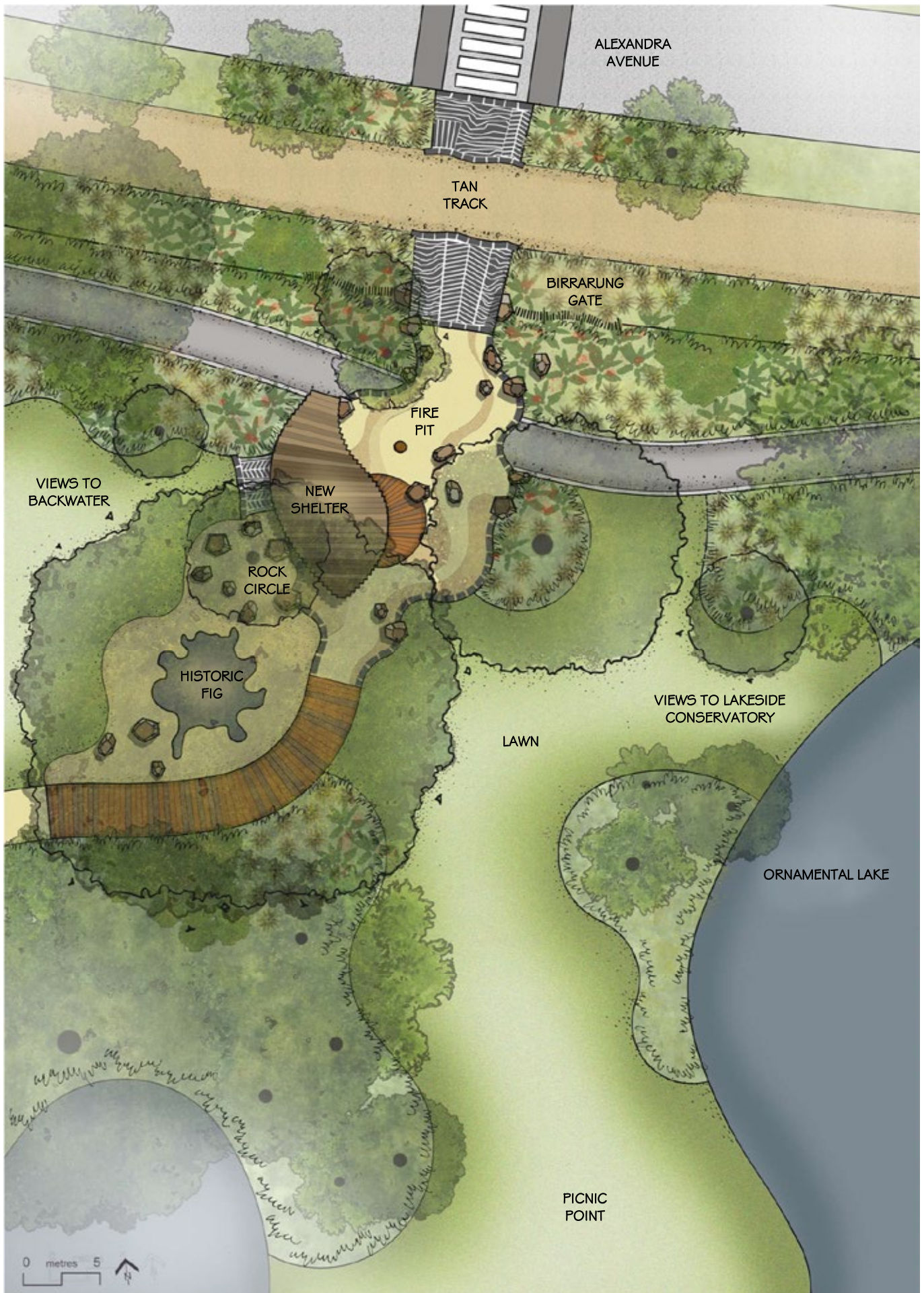
### Major elements

- ➔ Create an underground vault area to house the State Botanical Collection
- ➔ Demolish the 1988 extension and repurpose the original 1934 Herbarium building
- ➔ Create a centre for nature, science and culture





# BIRRARUNG GATE





## BIRRARUNG GATE

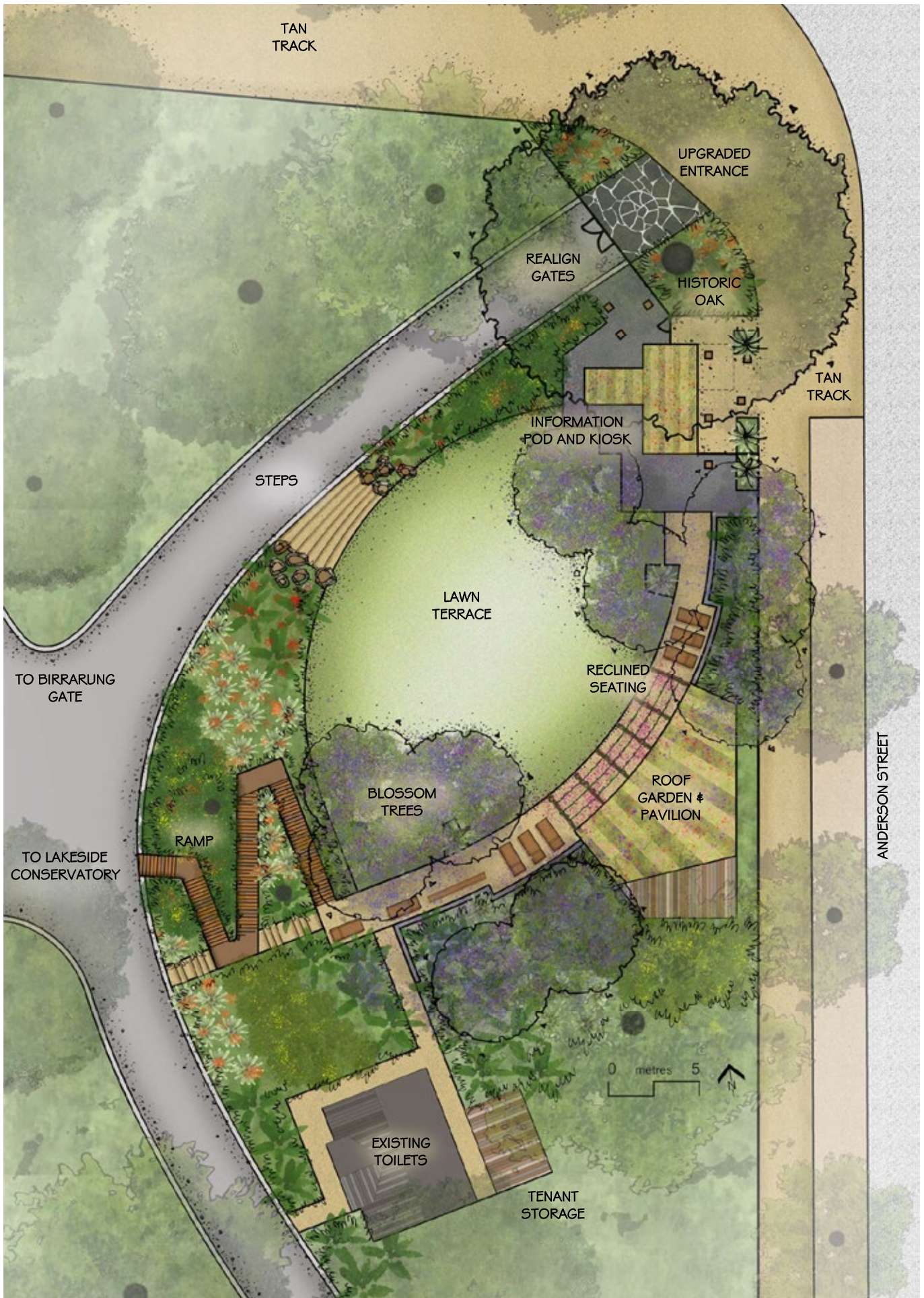
### Design statement

A new gate will be created along the northern border, located where the Birrarung (the Yarra River) once flowed through the Gardens. The landscape will begin outside the gates, creating a distinct change in character, drawing people into the Gardens to catch a glimpse of the new Lakeside Conservatory across the Ornamental Lake. This will become a major new entrance to Melbourne Gardens, celebrating the indigenous landscape: its plants, animals, landform and people. The design will use materials, structure and patterning to communicate the Aboriginal stories about Country which are deeply embedded in the history of the place.

### Major elements

- ➔ Work with the Traditional Owners in the design of the space
- ➔ Highlight the seasons recognised by Traditional Owners
- ➔ Provide a seamless connection to Long Island with views to the Backwater
- ➔ Use natural materials such as sawn basalt, weathered hardwood and flamed timbers
- ➔ Replace Clematis Shelter with a new shelter, becoming a place for Welcome and Acknowledgement of Country ceremonies
- ➔ Continue landscaping across the Tan Track, connecting to the nearby boat landing, bike trails and bus parking
- ➔ Guide visitors through the Gardens and across the Ornamental Lake to the new Lakeside Conservatory
- ➔ Focus on Victorian and indigenous plants while retaining existing canopy trees.

# TERRACE GARDENS





## TERRACE GARDENS

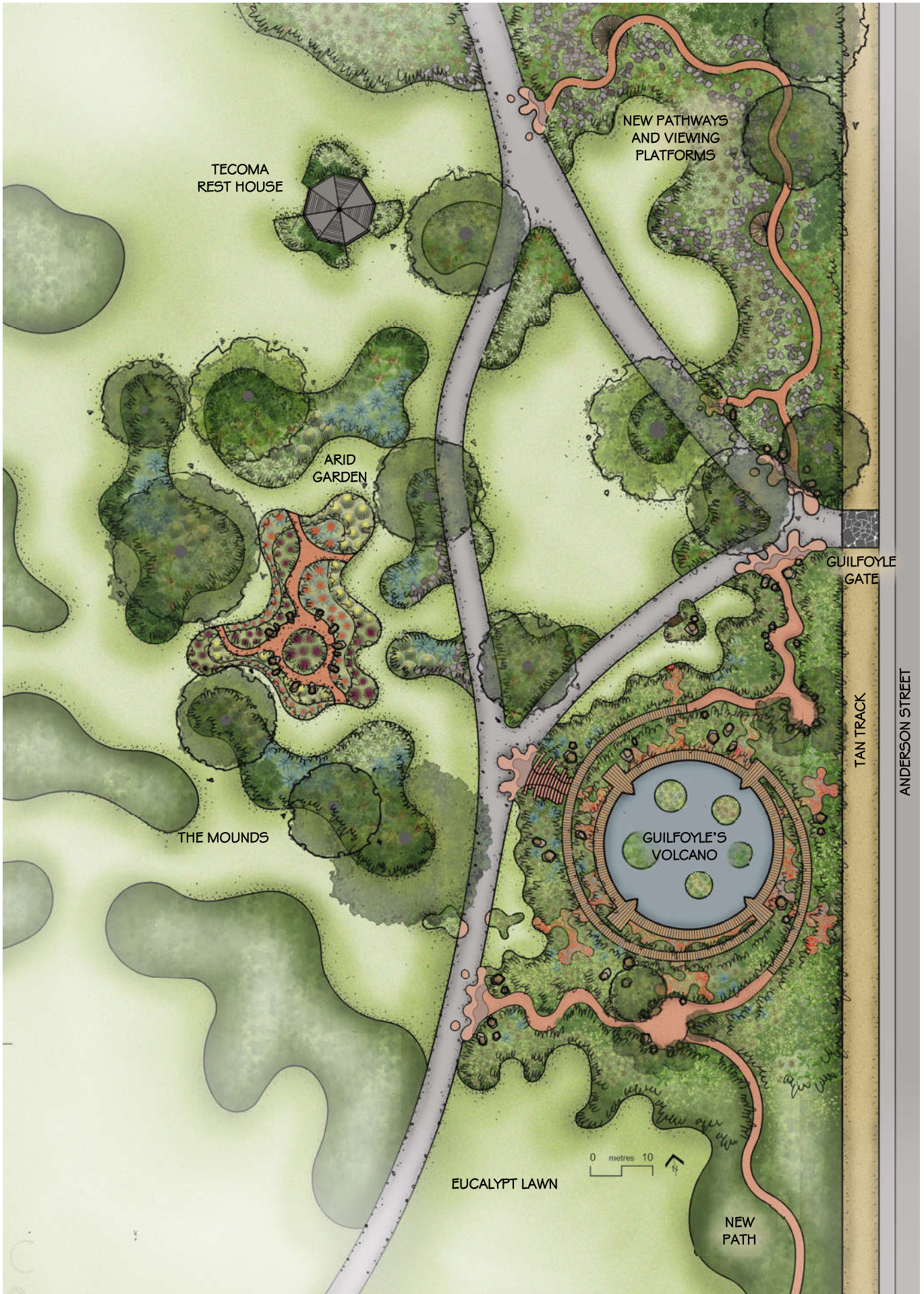
### Design statement

The corner of Anderson Street and Alexandra Avenue inside Terrace (A) Gate is to be redeveloped into a new welcoming arrival space for the Gardens, with a focus on health and wellbeing, and better connectivity for users of the Tan Track. The design will remove vehicles from the area and provide a stronger focus on pedestrian access and plant detail. The existing grand oak tree will be revealed to the Tan Track and there will be a strong focus on seasonal planting. A new terrace will blur the edges between the Tan Track and the Gardens, creating a meeting place with views across the Gardens and access to shaded seating and shelter.

### Major elements

- ➔ Realign the entrance gates to improve the Tan Track/Gardens interface
- ➔ Provide a small visitor services pod as part of the built form
- ➔ Provide sensitively designed permanent storage facilities for onsite partners
- ➔ Rename A Gate entrance, Terrace Gate
- ➔ Provide a new lawn terrace, open to the public but with the opportunity for appropriate scheduled activities
- ➔ Provide an accessible pathway from the entrance gates into the Gardens, connecting Anderson Street bus parking to the Lakeside Conservatory and toilet facilities
- ➔ Remove all vehicles from the precinct, creating a safer pedestrian environment
- ➔ Create a green lawn, roofed garden pavilion suitable for programmed Learning and Participation programs and bookable small events
- ➔ Create a rejuvenating space with reclined seating nestled in bold, seasonal planting displays.
- ➔ Create a green-roofed kiosk opening to both the Tan Track and Gardens

# ARID AND DRYLANDS PRECINCT





## ARID AND DRYLANDS PRECINCT

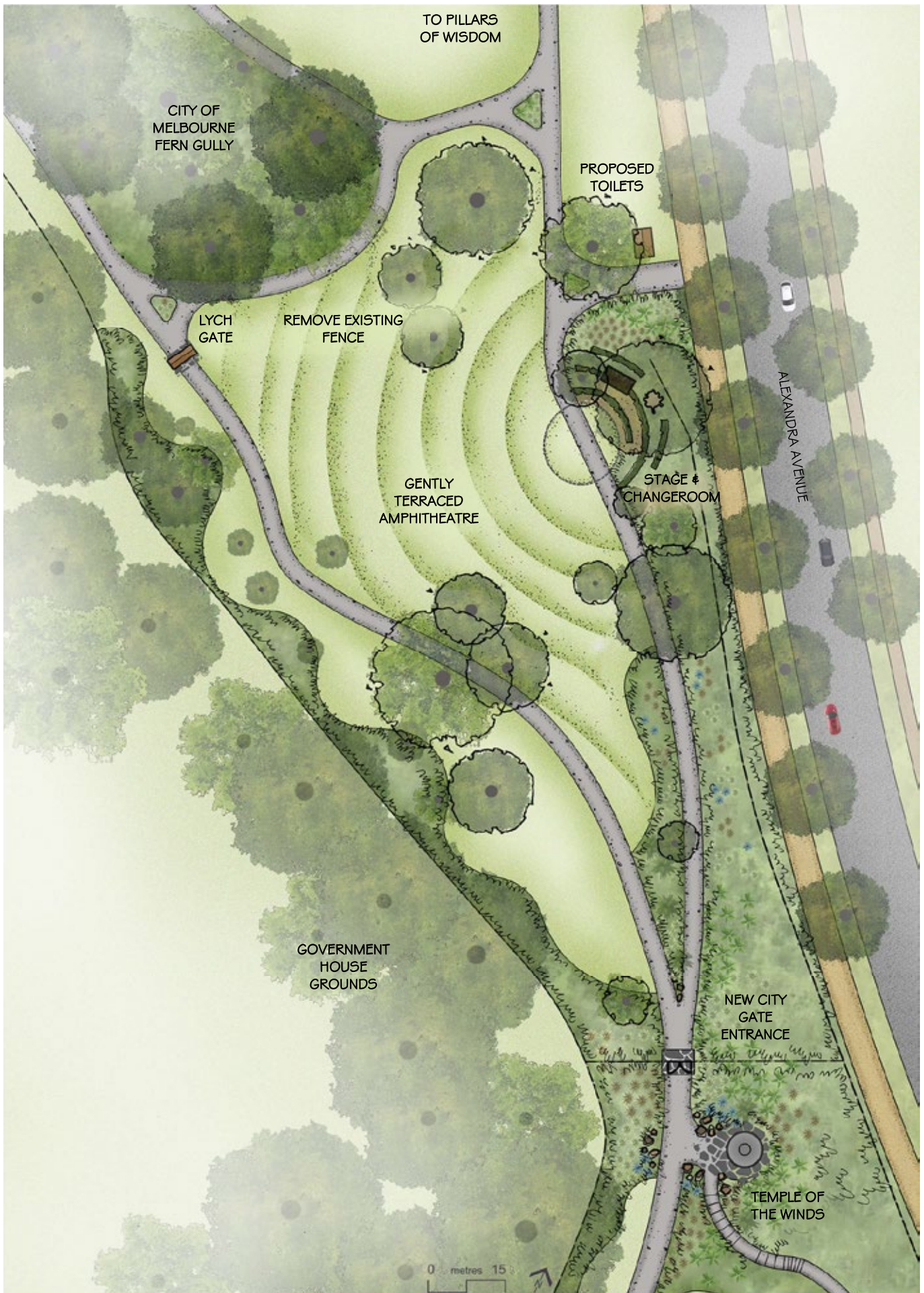
### Design statement

The area around Guilfoyle (C) and Domain Road (D) Gates, including Guilfoyle’s Volcano, Arid Garden, California Collection and Eucalypt Lawn will be developed into a broader Arid and Drylands Precinct. The new design will begin outside Guilfoyle Gate (C), creating an evocative arid and drylands planting theme that will continue throughout the area. This focus is consistent with the RBGV’s Landscape Succession Strategy and expands on the success of the Volcano development completed in 2010. The centrepiece of the new development is the redesign of the Arid Garden, where there is a spotlight on form, colour and the Fields cacti and succulent collection.

### Major elements

- ➔ Redesign and rebuild the Arid Garden to better integrate into the overall Guilfoyle landscape, and to improve display and interpretation of the cacti and succulent collection *[completed and opened November 2020]*
- ➔ Rename C Gate entrance, Guilfoyle Gate and D Gate entrance, Domain Road Gate
- ➔ Beautify the entrance at Guilfoyle Gate (C) and strengthen the Gardens’ presence on Anderson Street
- ➔ Refocus the California Collection garden to showcase plants from the North America Drylands and rejuvenate the path system, providing views across the landscape
- ➔ Extend the Australian Forest Walk around the Eucalypt Lawn, including the minor pathway to meet Guilfoyle’s Volcano
- ➔ Refocus the planting design into dry forest species around the Eucalypt Lawn
- ➔ Create a serviced marquee space near the Tecoma Rest House
- ➔ Restore the historic Nareeb Gates at Domain Road Gate (D)
- ➔ Expand rockwork throughout the area consistent with Guilfoyle’s vision.

# HUNTINGFIELD LAWN AMPHITHEATRE







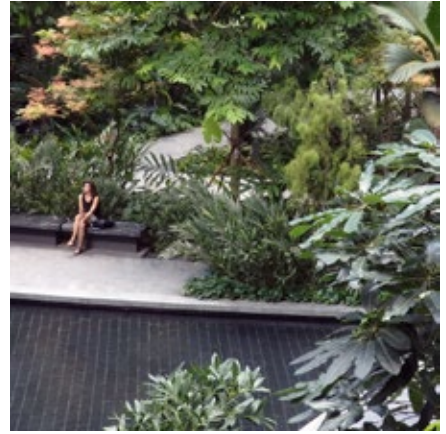
## HUNTINGFIELD LAWN AMPHITHEATRE

### Design statement

The existing Huntingfield Lawn will be gently profiled to become an open-air performance space. The existing Gardens boundary fence will be removed creating a seamless connection to the surrounding Domain Parklands. This allows the existing contouring to inform the design, creating a natural amphitheatre suitable for small boutique performances. A new entrance with an arid planting theme will sit adjacent to the Temple of the Winds, reflecting Guilfoyle's original vision.

### Major elements

- ➔ Relocate the existing boundary fence and gates and create a new City Gate entrance at the Temple of the Winds, assisting with wayfinding and orientation
- ➔ Trial the use of the site as a performance space
- ➔ Create a gently contoured lawn area and stage by building up existing levels, forming a space for passive use and providing an area suitable for ticketed events
- ➔ Provide screened dressing room and storage for performance
- ➔ Strengthen the Gardens' connection to the Domain and visibility from the Tan Track
- ➔ Improve planting along the Government House boundary to define the space
- ➔ Use clear trunked shade trees in lawn areas, strengthening the existing landscape character
- ➔ Explore the opportunity for a shared toilet facility with the City of Melbourne
- ➔ Explore options for the realignment of the fence in consultation with Heritage Victoria.



## LAKESIDE CONSERVATORY

### Design statement

A new Conservatory is planned by the Ornamental Lake to provide a place for plants and people to meet. This could be a space where people come, regardless of the weather, to meet, work, rest or play in an environment which is brimming with plants. As a working theme, 'habitat for humans' would provide a plant experience that is unique and inspiring. The Lakeside Conservatory should be a world-class, green exemplar conservatory that nestles comfortably within the picturesque Guilfoyle landscape with plant collections that support the science and research of the organisation, and the health and wellbeing of visitors to Melbourne Gardens.

### Major elements

- ➔ Replace the ageing Terrace Tea Rooms, and create a new destination meeting place for Melbourne
- ➔ Create an immersive plant experience where visitors can sense the intricacies and abundant richness of plants
- ➔ Re-establish the lake edge, lawns and adjoining pathways to reflect Guilfoyle's vision
- ➔ Site sensitively within the picturesque landscape on the edge of the Ornamental Lake
- ➔ Explore further the concept of a series of controlled climate 'pods' that will support the living collections and curation work of the Gardens
- ➔ Provide back-of-house entry and exit points including nursery facilities for seasonal displays.
- ➔ Sensitively work with the existing topography to create a series of terraces nestled into the hill
- ➔ Provide a meeting place for the whole community, including a restaurant, meeting and conference rooms, event spaces and visitor amenity



## SENSORY GARDEN

### Design statement

Adjacent to the recently renovated Fern Gully Rest House, a new Sensory Garden is the final stage of the Fern Gully Restoration Project. The garden takes visitors through a series of immersive plant experiences to stimulate their senses. Views, beauty, colour, sound, scent, textures and the form of plants are used to create a remarkable sensory experience. An accessible pathway has been built and the opportunity for people to take off their shoes and find a place of quiet solitude *[completed and opened December 2020]*

### Major elements

- ➔ Design for visitors with special needs, creating a range of spaces to support people with physical, mental and cognitive limitations
- ➔ Provide a range of seating opportunities, including community rock seats, hanging nets and a lotus jetty
- ➔ Use the Fern Gully Rest House to provide a gathering space and sheltered seating.
- ➔ Create a deliberate, contemplative and slow-moving journey through a series of immersive plant experiences including a bamboo forest, lotus garden, and giant Colocasia garden
- ➔ Include an accessible pathway through the space, with a simple bridge to cross the Fern Gully creek



## WILD WOOD

### Design statement

The northern reaches of Hopetoun Lawn will be subtly developed to create the Wild Wood. Nestled under a group of giant oaks, this secluded and wilder area is the perfect place for children and their families to engage in nature-based play, easing pressure on the The Ian Potter Foundation Children's Garden. Cubby building, mud play and scrambling will be the main activities and the Learning and Participation team will be able to use the space for Bush Kinder activities.

### Major elements

- ➔ Provide bush kinder and nature play as an extension of current Learning and Participation programs
- ➔ Provide unstructured, immersive play for a range of ages
- ➔ Minimise built form and provide definition for the existing space
- ➔ Incorporate a log trail and rough pathways
- ➔ Provide access to 'found materials' on site
- ➔ Create a small treehouse discreetly built into the oaks
- ➔ Provide small-scale seating areas.

## CREATIVE SEATING

### Design statement

Several sites in the Gardens including the Sensory Garden, Vireya bed, Tennyson Lawn, Australian Bed and the Mounds offer the opportunity for alternatives to the traditional seating provided by benches around the Gardens. The success of the Bird's Nest swing in the Fern Gully, and the planned hanging nets in the Sensory Garden are examples which appeal to a different demographic and encourage canopy gazing, forest bathing, or simply provide a 'hang out' space for young people and those with different accessibility needs.

### Major elements

- ➔ Develop designs for alternative seating including hanging nets, gentle swings and chaise lounge style seating
- ➔ Assess and trial potential new locations for seating
- ➔ Provide seats in a range of sizes, catering to couples, small groups and families
- ➔ Select sites which are easily accessible and will protect existing plants
- ➔ Create mulch pathways around the seats to provide access and reduce compaction.



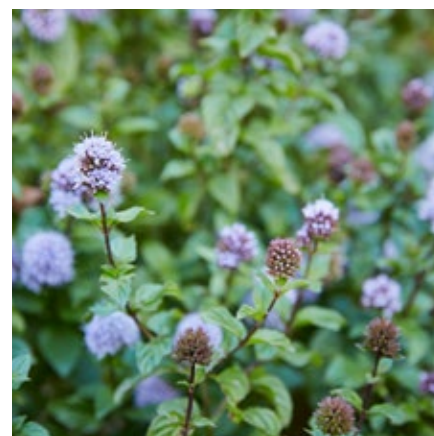
## HERB AND MEDICINAL GARDEN

### Design statement

A new Herb and Medicinal Garden is to replace the existing Herb Garden at the eastern end of the Oak Lawn, the site of Guilfoyle's 1881 Medicinal Garden. The new design will be a contemporary interpretation of a medicinal garden, seamlessly integrated into the picturesque landscape. The space will be designed for use by the Learning and Participation team, with good access to shaded seating and working spaces.

### Major elements

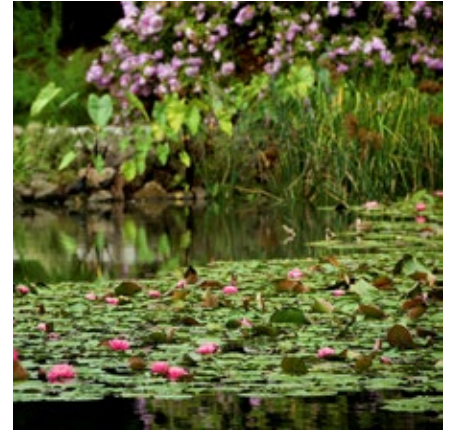
- ➔ Explore the contemporary relationship between biosciences, agriculture, food and habitat
- ➔ Replace the 1985 Herb Garden, which sits awkwardly in the Guilfoyle landscape
- ➔ Provide working space and facilities for Learning and Participation programs
- ➔ Include an all-abilities access path through the space.



## NYMPHAEA LILY LAKE

### Design statement

The area adjacent to Nymphaea Lily Lake, including the Ellis Stones Rockery and lower portion of the New Zealand Collection, is to be sensitively redesigned to improve views of the lake and reinstate the lawn sweep reflected in Guilfoyle's original vision. Significant elements of the original rockery, constructed in 1969, will be retained, but the taller vegetation and large *Phormium* spp. that block the view will be replaced with lawn, providing foreground and scale to the lake.



### Major elements

- ➔ Remove tall plantings from the Ellis Stones Rockery
- ➔ Reshape the lawn areas to be more sympathetic to Guilfoyle's original plan
- ➔ Manage the vegetation in the constructed wetlands to increase the foreground open water when viewed from the Australian Forest Walk
- ➔ Sensitively reshape garden beds at the western end of the New Zealand Bed, and eastern end of the New Caledonia Bed to reinstate the mass and void
- ➔ Remove gravel pathways.



## ENTRANCES

### Design statement

The Gardens' entrances are to be renamed and gradually upgraded, assisting with wayfinding and reflecting their position as entrances to a world-class botanic garden. The historic fabric will be maintained and improved, while a new range of materials and landscape details will replace the existing surfaces and signage. Wherever possible the planting and landscape detailing will start outside the Gardens and involve consultation with the appropriate external stakeholders.



### Major elements

- ➔ Establish three new gates: Main Gate, City Gate and Birrarung Gate
- ➔ Develop a hierarchy in the gate system to assist with wayfinding
- ➔ Select design themes for each entrance in response to the microclimate and area's broader themes
- ➔ Repair the fabric of the historic gates and fences at each entrance, commencing with the Nareeb Gates at Domain Road Gate (D) entrance
- ➔ Give consideration, where appropriate, to developing new decorative gates
- ➔ Develop strongly themed, high visual-impact planting around all primary entrances
- ➔ Remove G Gate and Lych Gate and replace them with a new City Gate located near the Temple of the Winds while retaining the historic fabric at Lych Gate.



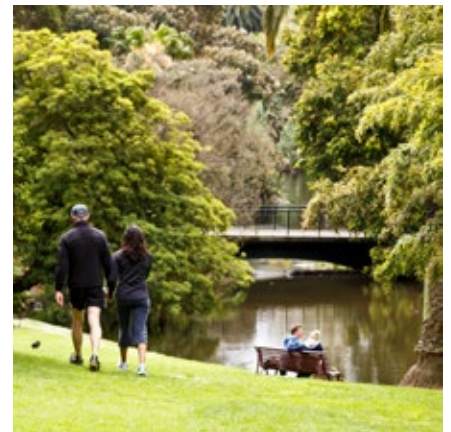
## ORNAMENTAL BRIDGES

### Design statement

The Eel Bridge and the two bridges at each end of Long Island will be reinstated as picturesque landscape features; becoming focal points to be glimpsed across an expanse of water, and places to pause and view the landscape. The design of each bridge will draw inspiration from the landscape with its materials, scale and form, reflecting its place within the Gardens.

### Major elements

- ➔ Design each of the bridges as contemporary follies, taking inspiration from historic forms but designed as a contemporary, artistic feature
- ➔ Create a sense of transition, emphasising the views from the bridges and a feeling of crossing the water
- ➔ Work with the Traditional Owners to rename the Long Island bridges to reflect the Birrarung Gate precinct
- ➔ Design all bridges for the appropriate vehicle loads and sizes and to be fully accessible.



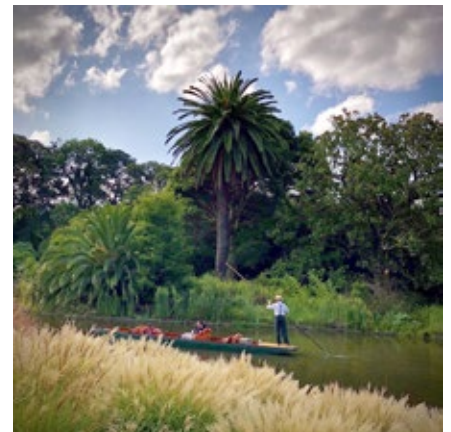
## THE ISLANDS

### Design statement

The six islands in the Gardens—Guerard, Fountain, Dallachy, Baker and Ridout Islands in the Ornamental Lake and Sayce Island in Central Lake—all need varying degrees of work. Guerard, Sayce, Dallachy and Baker have been renovated, but require further plant detailing, which will be undertaken gradually. However, Fountain and Ridout Islands require clear design intent statements and more immediate work to manage a range of issues.

### Major elements

- ➔ Improve the island landscapes by addressing weed issues and improving planting detail
- ➔ Rejuvenate Fountain Island as an indigenous landscape and habitat zone similar to Baker Island
- ➔ Maintain Baker Island as an indigenous landscape and habitat zone, a visual extension of the Long Island and Backwater landscape
- ➔ Rejuvenate Ridout Island as an 'exotic' habitat zone
- ➔ Develop Dallachy Island as an informal gathering space by re-activating the existing decking and facilitating boat access
- ➔ Continue to develop Guerard Island as a planted focal point with strong foliage and colour detail
- ➔ Continue to develop Sayce Island as a planted focal point with strong foliage and colour detail and increased foreground planting.



## REST HOUSES AND FOLLIES

### Design statement

In recent years, Fern Gully, William Tell, Separation Tree and Tecoma Rest Houses have been restored, complementing the earlier restoration of the Rose Pavilion and Temple of the Winds. Work to the remaining shelters will enhance their role as picturesque garden follies. The Clematis Shelter will be replaced as part of the Birrarung Gate redesign and Lakeview Rest House will be relocated to an appropriate location on the Northern Border.

### Major elements

- ➔ Replace the non-heritage Clematis Shelter with a contemporary, architect-designed shelter as part of the Birrarung Gate design
- ➔ Relocate Lakeview Rest House to a location along the eastern end of Northern Border, reinstating its view across the Ornamental Lake
- ➔ Reconstruct the landscape around the Temple of the Winds to better reflect Guilfoyle's original design intent
- ➔ Repair the podium of the Temple of the Winds and develop a long-term maintenance plan for care of the structure
- ➔ Repair the Rose Pavilion and develop a long-term maintenance plan for its care.



## PICTURESQUE ROCKERIES AND RUINS

### Design statement

The Gardens' historic rockeries and ruins are important picturesque focal points and are to be restored and replanted. The outstanding Robinette Rockery at East Gate (B) is to be renovated as a picturesque feature and fitting entrance statement. Rockeries at Temple of the Winds, Fern Gully, William Tell Rest House and Five Ways have recently been restored. However, many are still in disrepair or smothered by plants. These are to be refurbished and replanted including the Bluff Rockery and Directors' Roll.

### Major elements

- ➔ Restore the Robinette Rockery to showcase bold foliage plants in keeping with Guilfoyle's vision
- ➔ Commission an engineering assessment of the Bluff Rockery rockwork and Directors' Roll and develop a plan for their restoration and long-term maintenance
- ➔ Allow enough space on the Directors' Roll for the next 20 years of Directors
- ➔ Share the story of the river escarpment, working with Traditional Owners in the display and interpretation
- ➔ Reinstating small-scale plant ledges and refine irrigation
- ➔ Repair and restore all damaged rockwork and ruins, including the Touchwood Ruin, Rain Tree Bed Ruin and rockeries opposite William Tell Rest House, at Terrace Gate (A), Fern Gully entrances and Guilfoyle Gate (C) (see *Landscape Character Plan*, page 62)
- ➔ Reinstating water holding areas within rockeries to provide habitat for small vertebrates, especially frogs
- ➔ Restore the original purpose of the rockeries as a setting for high-impact planting, with crannies tastefully adorned with a mix of prostrate, and foliage plants.







Horticulturists planting the Fern Gully Wellbeing Gardens, 2019

### Timelines

The precise timing for each Future Development will depend on funding and competing commitments.

Project	Short 0-5 years	Medium 6-10 years	Long 11-20 years
<b>Nature and Science Precinct</b>			
National Herbarium of Victoria and vault with re-opened 1934 building			
Melbourne Observatory and Great Melbourne Telescope House re-opened to public			
Centre for Gardens Leadership			
New Learning and Participation spaces			
The Ian Potter Foundation Children’s Garden expansion			
Reworked pathways and entrances			
Expanded Visitor Centre and visitor engagement spaces			
<b>Birrarung Gate</b>			
<b>Terrace Gardens</b>			

Project	Short 0-5 years	Medium 6-10 years	Long 11-20 years
<b>Arid and Drylands Precinct</b>			
Arid Garden	■		
North America Drylands	■		
Guilfoyle Gate (C)	■		
Connection to Australian Forest Walk	■		
Domain Road Gate (D) and Nareeb Gates	■		
<b>Huntingfield Lawn Amphitheatre</b>			
City Gate and Temple of the Winds landscaping		■	
Amphitheatre		■	
Toilets with City of Melbourne		■	
<b>Lakeside Conservatory</b>			
			■
<b>Sensory Garden</b>			
	■		
<b>Wild Wood</b>			
	■		
<b>Creative Seating</b>			
	■	■	
<b>Herb and Medicinal Garden</b>			
		■	
<b>Nymphaea Lily Lake (including Ellis Stones Rockery)</b>			
	■	■	
<b>Entrances (remaining)</b>			
East Gate (B)		■	■
South Gate (E)		■	
North Gate (H)		■	■
<b>Ornamental Bridges</b>			
Eel Bridge		■	
Long Island Bridges		■	
<b>The Islands</b>			
Fountain Island rejuvenation		■	
Ridout Island rejuvenation		■	
Dallachy Island reactivation		■	
Guerard Island planting		■	
Sayce Island planting	■		
<b>Rest Houses and Follies</b>			
Relocate Lakeview Rest House	■		
Repair Temple of the Winds podium	■		
Repair the Rose Pavilion	■		
<b>Picturesque Rockeries and Ruins</b>			
Robinette Rockery	■		
Fern Gully entrance rockeries	■		
Guilfoyle Gate (C) Rockery	■		
Bluff Rockery and Directors' Roll		■	
Touchwood Ruin		■	
Terrace Gate (A) Rockery		■	
Rain Tree Bed Ruin			■
William Tell Rest House Rockery			■

## SUPPORT THE FUTURE OF YOUR GARDENS

---

The *Melbourne Gardens Master Plan 2020-2040* outlines a broad vision for Melbourne Gardens, developed in consultation with stakeholders and the public. Each project proposal will require further design and technical resolution, and consultation with stakeholders before indicative costings can be produced, and the project funded, documented and eventually completed. The full Melbourne Gardens Master Plan 2020-2040 is available upon request.

Many of Royal Botanic Gardens Victoria's key projects are entirely philanthropically funded. If you are interested in supporting the future of Melbourne's beloved gardens, leaving a lasting legacy for generations to come, please contact the Development Team on (03) 9252 2713 or [development@rbg.vic.gov.au](mailto:development@rbg.vic.gov.au).



For references and image credits please see full master plan document at [www.rbg.vic.gov.au](http://www.rbg.vic.gov.au)

